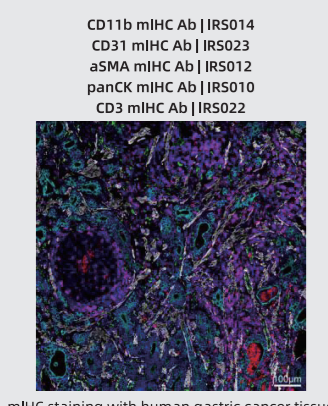
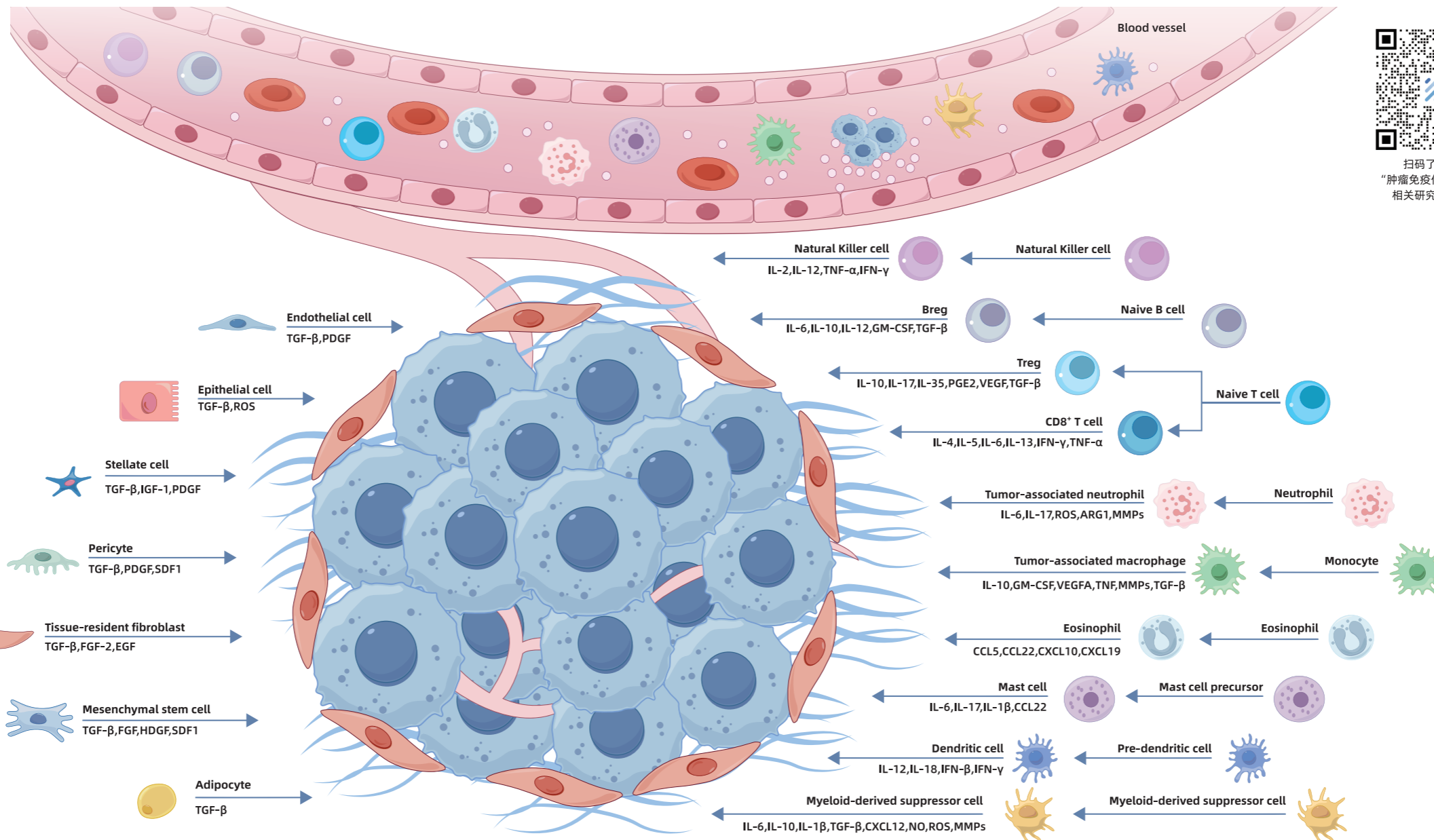
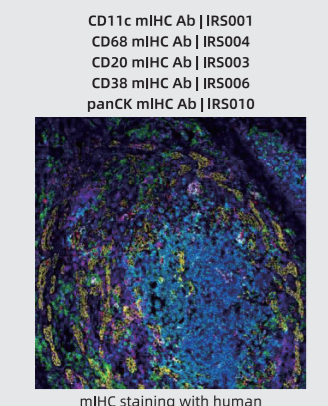


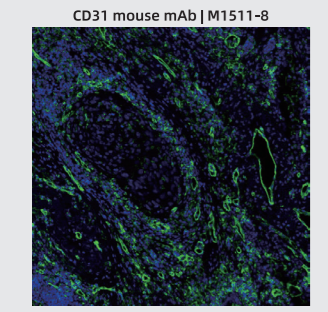
# Tumor Immune Signaling Pathway



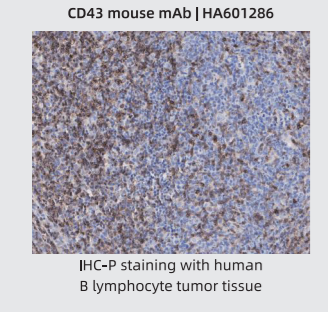
mIHC staining with human gastric cancer tissue



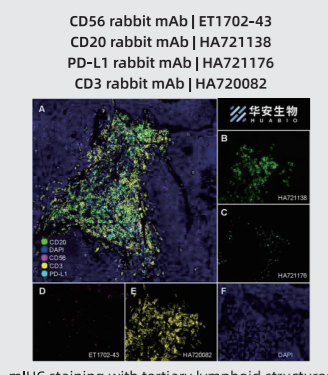
mIHC staining with human cholangiocarcinoma tissue



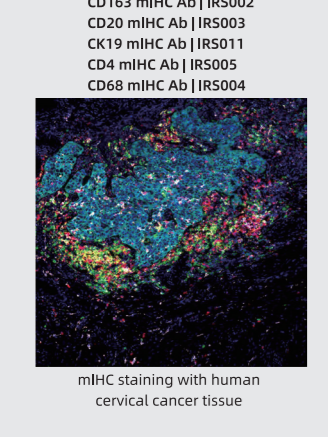
mIHC staining with human lung squamous cell carcinoma tissue



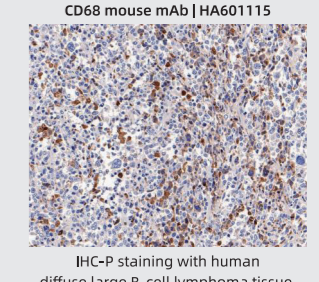
IHC-P staining with human B lymphocyte tumor tissue



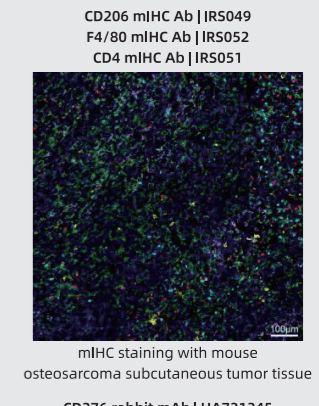
mIHC staining with tertiary lymphoid structures of human small cell lung cancer tissue



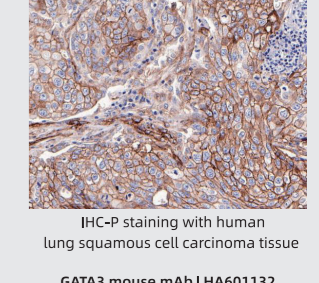
mIHC staining with human cervical cancer tissue



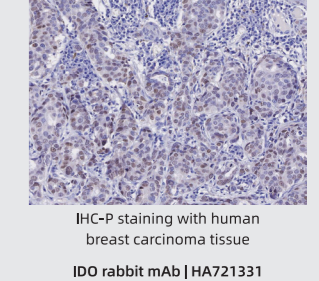
IHC-P staining with mouse osteosarcoma subcutaneous tumor tissue



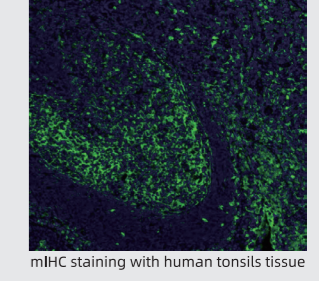
mIHC staining with human lung squamous cell carcinoma tissue



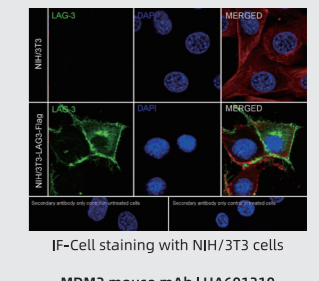
IHC-P staining with human breast carcinoma tissue



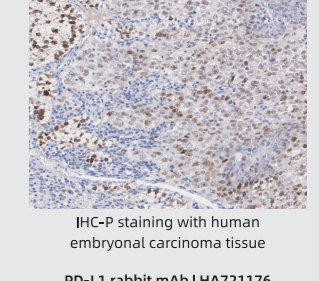
IHC-P staining with human tonsils tissue



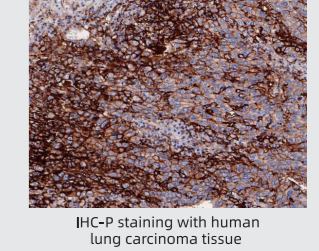
mIHC staining with human tonsils tissue



IF-Cell staining with NIH/3T3 cells



IHC-P staining with human embryonic carcinoma tissue



IHC-P staining with human lung carcinoma tissue

Product name	Catalog#	Species	Application
CD3 mIHC抗体	IRS022	H	mIHC
CD3 IHC抗体	HA720082	H	WB,IHC-P,IF-Tissue,IP,mIHC,IF-Cell
CD4 IHC抗体	ET1609-52	H	WB,IF-Cell,IF-Tissue,IHC-P,FC,mIHC
CD4 mIHC抗体	IRS005	H	mIHC
CD4 mIHC抗体	IRS051	Ms	mIHC
CD5 IHC抗体	HA721137	H	IHC-P
CD8 alpha	ET1606-31	H	WB,IF-Cell,IF-Tissue,IHC-P,FC
CD8 beta	HA723051	H	WB,IF-Cell,IHC-P,FC
CD10 IHC抗体	EM1901-26	H	WB,IHC-P,FC
CD11b	ET1706-04	H	WB,IHC-P,IF-Cell,IF-Tissue,mIHC
CD11b IHC抗体	HA722856	H,Ms,R	WB,IHC-Fr,IHC-P,IF-Tissue
CD11b mIHC抗体	IRS014	H	mIHC
CD11c IHC抗体	ET1606-19	H	WB,IHC-P,IP,mIHC
CD11c	HA722830	Ms	WB,IHC-P,IHC-Fr,IF-Tissue
CD11c mIHC抗体	IRS001	H	mIHC
CD13 IHC抗体	HA721160	H,Ms	IHC-P,WB
CD14 IHC抗体	HA721321	H,Ms	WB,IHC-P
CD14 mIHC抗体	IRS015	H	mIHC
CD15	HA721246	H	IHC-P,mIHC,FC
CD16 mIHC抗体	IRS017	H	mIHC
CD16 IHC抗体	HA721149	H	IHC-P,IF-Tissue,IF-Cell,mIHC
CD19 mIHC抗体	IRS018	H	mIHC
CD19	EM40308	H,Ms	WB,IHC-P,FC
CD19	ET1702-93	H	WB,IF-Cell,IF-Tissue,IHC-P,FC,mIHC
CD19	HA722073	Ms	WB,IHC-P,IF-Tissue,IP,IHC-Fr
CD20 mIHC抗体	IRS003	H	mIHC
CD20 IHC抗体	HA721138	H,Ms	IHC-P,mIHC,WB,IF-Cell,IP
CD22 IHC抗体	HA721157	H	WB,IHC-P
CD30 IHC抗体	HA722093	H	WB,IF-Cell,IHC-P,IF-Tissue
CD31 mIHC抗体	IRS023	H	mIHC
CD31 IHC抗体	M1511-8	H,Ms	WB,IF-Cell,IHC-P,mIHC
CD31	ET1608-48	H	WB,IHC-P,FC,IP,IF-Cell,IF-Tissue
CD36	ET1701-24	H,Ms,R	WB,IF-Cell,IF-Tissue,IHC-P,FC,IP
CD40	HA723170	H,Ms,R	IHC-P,IHC-Fr,IF-Cell,FC
CD40L	ET1703-64	H,Ms,R	WB,IF-Cell,IHC-P,FC
CD43 IHC抗体	HA601286	H	WB,IF-Cell,IHC-P
CD44	EM010805	H	WB,IHC-P,FC
CD44	HA722845	H,Ms,R	WB,IF-Cell,IHC-P,IF-Tissue,FC
CD45	ET1711-03	H	WB,IHC-P,FC,IF-Tissue,mIHC
CD45 mIHC抗体	IRS025	H	mIHC
CD45R mIHC抗体	IRS076	Ms	mIHC
CD47 IHC抗体	HA721158	H	IHC-P,FC
CD68 IHC抗体	HA601115	H	IHC-P,IF-Cell,FC,mIHC,IF-Tissue
CD68 mIHC抗体	IRS004	H	mIHC
CD68	HA722285	Ms,R	WB,IF-Cell,IHC-P,IHC-Fr,IF-Tissue
CD68	HA722737	Ms,R	WB,IF-Cell,IHC-P,IF-Tissue,IHC-Fr
CD79a IHC抗体	HA601118	H	WB,IHC-P
CD79a	ET1709-33	H	WB,IF-Tissue,IHC-P,FC
CD79b	HA720043	H	WB,IHC-P,FC
CD99 IHC抗体	HA721150	H	IHC-P
CD147 IHC抗体	ET1702-58	H,Ms,R	WB,IF-Cell,IF-Tissue,IHC-P
CD163	EM1901-90	H	WB,IHC-P,FC
CD163	ET1704-43	H	WB,IHC-P,mIHC,IF-Tissue,IP
CD163 mIHC抗体	IRS002	H	mIHC
CD276 IHC抗体	HA721245	H	IHC-P,FC,WB

Product name	Catalog#	Species	Application
LAG-3	HA721346	H,Ms	WB,IHC-P,IF-Cell
LAG-3 IHC抗体	HA721358	H	IHC-P,IF-Cell,WB,mIHC
LAG-3 mIHC抗体	IRS020	H	mIHC
F4/80	HA721520	Ms,R	WB,IHC-P,IF-Tissue,IHC-Fr,mIHC
F4/80	HA721745	Ms	WB,IHC-P,IF-Tissue
F4/80 mIHC抗体	IRS052	Ms	mIHC
FOXP3	ET1702-12	H,Ms,R	WB,IF-Cell,FC,IHC-P
FOXP3 mIHC抗体	IRS008	H	mIHC
FOXP3 IHC抗体	IRS053	Ms	mIHC
Galectin 9	HA721821	H,Ms	WB,FC
GATA3 IHC抗体	HA601132	H	WB,IHC-P,IF-Cell
HER2 / ErbB2 mIHC抗体	IRS034	H	mIHC
HER2 / ErbB2 IHC抗体	HA721178	H	IHC-P,WB,IF-Cell,FC,mIHC
Human CD45	HA601285	H	IF-Cell,FC
Human TNF alpha mIHC抗体	IRS040	H	mIHC
IL-17A mIHC抗体	IRS056	Ms	mIHC
IL3RA / CD123 IHC抗体	HA723076	H	WB,IF-Cell,IHC-P
ICAM1 IHC抗体	HA723089	H	WB,IHC-P
IDO IHC抗体	HA721331	H	IHC-P,IF-Cell,WB,mIHC
Integrin beta 3 IHC抗体	HA723085	H,Ms,R	WB,IHC-P
Liver Arginase IHC抗体	HA723143	H,Ms,R	WB,IHC-P,IF-Tissue
MAGEA1 IHC抗体	HA721197	H	IHC-P,WB
Mannose Receptor(CD206)	HA722892	Ms,R	WB,IHC-P,IF-Tissue,IHC-Fr,IF-Cell,IP,mIHC
Mannose Receptor(CD206) mIHC抗体	IRS049	Ms	mIHC
Mouse CD45R	HA601385	Ms	IHC-P,FC
MDM2 IHC抗体	HA601310	H,Mk	WB,IF-Cell,IHC-P
NCAM1 / CD56	ET1702-43	H,Z	WB,IF-Cell,IF-Tissue,IHC-P,FC,IP,mIHC
NCAM1 / CD56	HA722755	H,Ms,R	WB,IHC-P,IHC-Fr,IF-Cell,FC,IF-Tissue
NCAM1 / CD56 IHC抗体	HA723041	H	WB,IHC-P,IF-Tissue
NCAM1 / CD56 mIHC抗体	IRS026	H	mIHC
PD1	EM1707-60	H	WB,IF-Cell,IHC-P,FC
PD1	ET1606-41	H	WB,IHC-P
PD-L1 mIHC抗体	IRS059	Ms	mIHC
PD-L1	HA722184	Ms	WB,IHC-P,mIHC
PD-L1 IHC抗体	HA721176	H	IHC-P,mIHC,WB
PD1 Blocking	EM1701-17	H	ELISA,FC
CTLA-4	HA721269	H,Ms	IHC-P,mIHC
CTLA-4 mIHC抗体	IRS016	H	mIHC
T-bet / Tbx21	HA721901	H	WB,IHC-P,IF-Cell,FC
TIM 3	EM1701-20	H	WB,IF-Cell,IHC-P,FC
TIM 3 mIHC抗体	IRS077	H	mIHC
VISTA	HA721453	H	WB,IHC-P,IF-Cell,FC

Product name	Catalog#	Size	Sensitivity
Mouse CCL3/MIP-1 alpha ELISA Kit	EM0031	96T	0.51 pg/ml (10 µl)
Mouse CC15 / RANTES ELISA Kit	EM0032	96T	1.86 pg/ml (10 µl)
Mouse CXCL1 ELISA Kit	EM0017	96T	2.11 pg/ml (10 µl)
Mouse CXCL10/IP-10/CRG-2 ELISA Kit	EM0014	96T	213.35 pg/ml (10 µl)
Mouse CXCL2 ELISA Kit	EM0018	96T	10.2 pg/ml (10 µl)
Mouse CXCL9 ELISA Kit	EM0015	96T	0.29 pg/ml (10 µl)
Mouse GM-CSF/CSF2 ELISA Kit	EM0011	96T	0.19 pg/ml (10 µl)
Mouse Granzyme B ELISA Kit	EM0016	96T	9.91 pg/ml (10 µl)
Mouse PD-1 ELISA Kit	EM0037	96T	7.65 pg/ml (10 µl)
Mouse PD-L1 ELISA Kit	EM0036	96T	0.16 pg/ml (10 µl)
Mouse TNF-alpha ELISA Kit	EM0010	96T	0.097 pg/ml (10 µl)
Mouse TREM2 ELISA Kit	EM0039	96T	0.60 pg/ml (10 µl)
Mouse VEGF ELISA Kit	EM0013	96T	0.57 pg/ml (10 µl)

Product name	Catalog#	Species	Application
Human CD27/TNFRSF7	HA722973	H	ELISA(Cap)
Human CD27/TNFRSF7	HA722974	H	ELISA(Cap)
Human CD27/TNFRSF7	HA722975	H	ELISA(Det)
Human CD30	HA722187	H	ELISA(Cap)
Human CD30	HA722188	H	ELISA(Det)
Human CD31	HA722906	H	ELISA(Cap)
Human CD31	HA722907	H	ELISA(Det)
Human CD47	HA723272	H	ELISA(Cap)
Human CD47	HA723273	H	ELISA(Det)
Human CD63	HA722988	H	ELISA(Cap)
Human CD63	HA722989	H	ELISA(Det)
Human CD137	HA723009	H	ELISA(Cap)
Human CD137	HA723010	H	ELISA(Det)
Human CXCL1/GRO alpha	HA722493	H	ELISA(Cap)
Human CXCL1/GRO alpha	HA722494	H	ELISA(Det)
Human CXCL6/GCP-2	HA723314	H	ELISA(Cap)
Human CXCL6/GCP-2	HA723315	H	ELISA(Det)
Human ICAM1	HA723184	H	ELISA(Cap)
Human ICAM1	HA723185	H	ELISA(Det)
Human CTLA-4	HA722954	H	ELISA(Cap)
Human CTLA-4	HA722955	H	ELISA(Det)
Human LAG-3	HA722258	H	ELISA(Cap)
Human LAG-3	HA722259	H	ELISA(Det)
Human OX40/TNFRSF4	HA723187	H	ELISA(Cap)
Human OX40/TNFRSF4	HA723188	H	ELISA(Det)
Human GITR	HA722383	H	ELISA(Cap)
Human GITR	HA722384	H	ELISA(Det)
Human NCAM1	HA722946	H	ELISA(Cap)
Human NCAM1	HA722947	H	ELISA(Det),ELISA(Cap)
Human NCAM1	HA722949	H	ELISA(Det)
Human IDO1	HA723154	H	ELISA(Cap)
Human IDO1	HA723156	H	ELISA(Det),ELISA(Cap)
Human PD-L2	HA723145	H	ELISA(Cap)
Human PD-L2	HA723146	H	ELISA(Cap)
Human PD-L2	HA723147	H	ELISA(Det)
Mouse PD-1	HA722189	Ms	ELISA(Cap)
Mouse PD-L1	HA722190	Ms	ELISA(Det)

\*H: Human; Ms: Mouse; R: Rat; Z: Zebrafish; MK: Monkey

