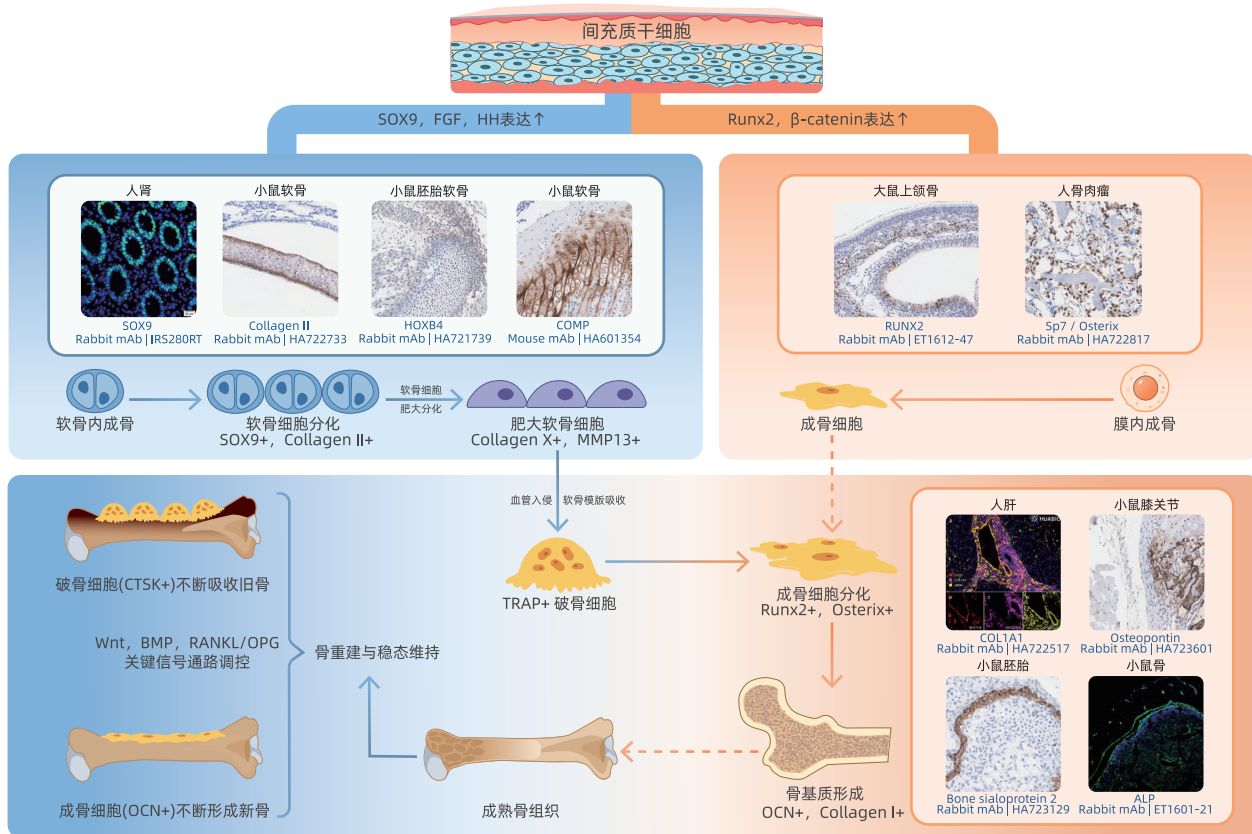


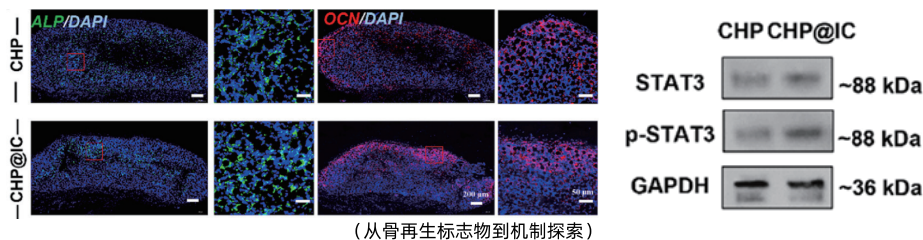
# 骨发育研究抗体

我们的抗体在相关骨细胞模型及骨组织切片中经过严格测试，致力于为您提供更精准、更可靠、更全面的骨发育研究工具。

## 骨发育与重塑过程中的关键环节



## 客户应用案例精选



在研究 STAT3 信号通路调控骨再生的课题中，四川大学团队使用 HUA BIO 的 **ALP 兔单抗 (Catalog# ET1601-21)** 进行免疫荧光染色，评估成骨细胞的早期生成；以及 **STAT3 (Catalog# ET1607-38)** 和 **phospho-STAT3 (S727) (Catalog# ET1607-39)** 兔单抗进行 WB 实验，评估 STAT3 通路介导的免疫调控作用。

数据来源: *Bioact Mater.* 2025 Jun 10:52:271-286. (四川大学)



成骨研究

Product name	Catalog#	Species reactivity	Tested applications	Antibody type
Alkaline Phosphatase	ET1601-21	H,Ms,R	WB,IHC-P,IF-Tissue	Rabbit mAb
Beta Catenin	ET1601-5	H,Ms,R	WB,IHC-P,IF-Tissue,IP,mIHC,IF-Cell,IHC-Fr,FC	Rabbit mAb
Beta Catenin	IRS043 (mIHC抗体)	H	mIHC	Rabbit mAb
Beta Catenin	IRS277MS (mIHC抗体)	H	mIHC	Mouse mAb
BMP2	HA722693	H,Ms,R	WB	Rabbit mAb
BMP4	HA721953	H,Ms,R	WB,IF-Cell,IHC-P,IF-Tissue	Rabbit mAb
Osteopontin	HA500464	H,Ms	WB,FC	Rabbit pAb
Osteopontin	HA723601	Ms,R	IHC-P,IHC-Fr,WB,IF-Cell	Rabbit mAb
RUNX2	ET1612-47	H,Ms,R	IF-Cell,IF-Tissue,IHC-P,WB,FC,IP,mIHC	Rabbit mAb
RUNX2	IRS047 (mIHC抗体)	H	mIHC	Rabbit mAb
RUNX2	IRS238RB (mIHC抗体)	Ms	mIHC	Rabbit mAb
Phospho-Smad1/5/9 (S463/S465/S467)	HA722566	H,Ms,R	WB,IHC,IF-Cell	Rabbit mAb
Smad2	ET1604-22	H,Ms,R	WB,IF-Cell,IHC-P,IP,FC	Rabbit mAb
Phospho-Smad2 (S250)	ET1612-32	H,Ms,R	WB,FC,IP,IHC-P	Rabbit mAb
Phospho-Smad2 (S255)	ET1702-34	H,Ms,R	WB,IHC-P,IP	Rabbit mAb
Phospho-SMAD2 (S465+467)	HA722443	H,Ms,R	WB,IF-Cell,IHC-P	Rabbit mAb
Phospho-Smad5 (S463 + S465)	ET1605-5	H,Ms,R	WB,IF-Cell,IHC-P	Rabbit mAb
Smad5	ET1606-26	H,Ms,R	WB,IF-Cell,IHC-P,FC	Rabbit mAb
Sp7 / Osterix	HA722817	H,Ms,R	WB,IHC-P,IF-Tissue,IHC-Fr	Rabbit mAb

软骨研究

Product name	Catalog#	Species reactivity	Tested applications	Antibody type
Aggrecan	ET1704-57	H,R	IHC-P	Rabbit mAb
Collagen II	HA722733	H,Ms,R	WB,IHC-P,IF-Tissue,IHC-Fr	Rabbit mAb
Collagen X	ET1702-13	R,H	WB	Rabbit mAb
IL-1 beta	ET1701-39	H	WB,IF-Cell,IF-Tissue,IHC-P	Rabbit mAb
IL-1 beta	HA601002	H,Ms,R	WB,ELISA,IF-Cell	Mouse mAb
SOX9	ET1611-56	H,Ms,R,Cmk,P	WB,IF-Cell,IHC-P,IP,FC,CUT&Tag-seq,mIHC	Rabbit mAb
SOX9	HA723548	H,Ms,R	IHC-Fr,IHC-P,WB,IF-Cell,IP,FC,CHIP	Rabbit mAb
SOX9	IRS280RT (mIHC抗体)	H	mIHC	Rat mAb
SOX9	IRS241RB (mIHC抗体)	Ms	mIHC	Rabbit mAb
Human TNF alpha	HA721286	H	IHC-P,mIHC	Rabbit mAb
TNF alpha	HA722022	H,Ms	WB	Rabbit mAb
Human TNF alpha	IRS040 (mIHC抗体)	H	mIHC	Rabbit mAb

破骨研究

Product name	Catalog#	Species reactivity	Tested applications	Antibody type
Cathepsin K	HA500469	H	WB,IF-Cell	Rabbit pAb
Cathepsin L/V/K/H	ET1703-44	H,Ms,R	WB,IF-Tissue,IHC-P	Rabbit mAb
Osteoprotegerin	EM1701-98	H,Ms,R	WB,IHC-P,IF-Cell	Mouse mAb
RANKL	HA500369	H,Ms,R	WB,IF-Cell	Rabbit pAb
TRAP	HA721897	H	WB,IHC-P	Rabbit mAb

ELISA Kits

Product name	Catalog#	Size	Sensitivity
Human cIAP2 ELISA Kit	EH0123	96T	0.81 pg/ml (50 µl);1.59 pg/ml (10 µl)
Human CTGF/CCN2 ELISA Kit (One step)	EHY0156	96T	0.07 ng/ml (50 µl);0.35 ng/ml (10 µl)
Human IL-1β ELISA Kit	EH0006	96T	0.77 pg/ml (10 µl)
Human IL-6 ELISA Kit	EH0001	96T	0.26 pg/ml (50 µl) ;0.43 pg/ml (10 µl)
Human Leptin ELISA Kit	EH0056	96T	9.45 pg/ml (50 µl);18.83 pg/ml (10 µl)
Human Leptin Receptor ELISA Kit	EH0187	96T	0.90 pg/ml (50 µl);5.07 pg/ml (10 µl)
Human Osteopontin (OPN) ELISA Kit	EH0057	96T	0.04 ng/ml (50 µl);0.12ng/ml (10 µl)
Human Osteoprotegerin/TNFRSF11B ELISA Kit	EH0070	96T	0.37 pg/ml (50 µl);2.53 pg/ml (10 µl)
Human TNF RII/TNFRSF1B ELISA Kit	EH0148	96T	0.27 pg/ml (50 µl);5.77 pg/ml (10 µl)
Human TNF-α ELISA Kit	EH0002	96T	0.21 pg/ml (50 µl);0.26 pg/ml (10 µl)
Mammal Insulin ELISA Kit	EH0038	96T	60.07 pg/ml (50 µl);314.56 pg/ml (10 µl)
Mouse IL-1β ELISA Kit	EM0029	96T	0.91 pg/ml (10 µl)
Mouse IL-1β Super Sensitivity ELISA Kit (高敏)	EM550029	96T	0.12 pg/ml (50 µl);0.36 pg/ml (10 µl)
Mouse IL-6 ELISA Kit	EM0004	96T	0.36 pg/ml (10 µl)
Mouse Leptin ELISA Kit	EM0027	96T	19.30 pg/ml (50 µl)
Mouse Pro-collagen I alpha 1/COL1A1 ELISA Kit	EMY0045	96T	0.01 pg/ml (10 µl)
Mouse RANKL/TRANCE/TNFSF11 ELISA Kit	EM0044	96T	0.36 pg/ml (10 µl)
Mouse TNF-α ELISA Kit	EM0010	96T	0.097 pg/ml (10 µl)
Rat IL-1β ELISA Kit	ER0001	96T	17.11 pg/ml (50 µl)
Rat IL-6 ELISA Kit	ER0004	96T	7.05pg/ml (50 µl)
Rat TNF-α ELISA Kit	ER0007	96T	0.08 pg/ml (50 µl);0.16 pg/ml (10 µl)

\*H: Human; Ms: Mouse; R: Rat; Cmk: Cynomolgus monkey; P: Pig

扫码详见更多  
“骨发育”  
研究产品信息

