

衰老标志物检测工具

准确识别

功能分析

提升效率

深入机制研究

细胞衰老是肿瘤、神经退行性疾病、衰老及再生医学等领域的核心研究方向。精准检测衰老细胞及其特异性标志物，是阐明其生理与病理机制的关键。华安生物 (HUABIO) 提供经过严格验证的、覆盖多靶点的产品线组合，助力研究人员在衰老领域的前沿突破。

细胞衰老核心标志物概览

Senescent Cells

<p>衰老相关分泌表型</p> <p>关键检测靶点 IL-6, IL-1β, MMP-3, TGF-β, GDF15</p>	<p>细胞周期停滞</p> <p>关键检测靶点 Phospho-Rb, Ki67, p21, p16, p53</p>	<p>溶酶体活性</p> <p>关键检测靶点 GLB1, CTSD, LAMP1/2</p>	<p>DNA损伤与染色质变化</p> <p>关键检测靶点 γ-H2A.X, 53BP1, HMGB1, Lamin B1</p>	<p>代谢与自噬调节</p> <p>关键检测靶点 SQSTM1/p62, mTOR, AMPK, LC3, SIRT1</p>
---	--	---	---	--

Mouse brain glioma

p21
rabbit mAb | IRS260RB

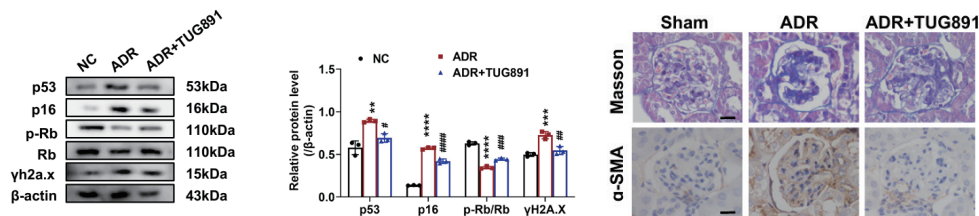
Mouse colon

LAMP1
rabbit mAb | HA722302

<p>MCF7 cells</p> <p>Phospho-Rb(S807/S811) rabbit mAb HA723268</p>	<p>HeLa cells</p> <p>LC3B rabbit mAb ET1701-65</p>	<p>HeLa cells</p> <p>p16INK4a mouse mAb HA601131 Ki67 rabbit mAb HA721115</p>	<p>4T1 cells</p> <p>γ-H2A.X rabbit mAb ET1602-2</p>	<p>HEK-293 cells</p> <p>Lamin B Receptor rabbit mAb HA721912</p>	<p>C6 cells</p> <p>HMGB1 rabbit mAb ET1601-2</p>
--	--	---	---	--	--

<p>Mouse liver</p> <p>Phospho-p53 (S33) rabbit mAb HA722703</p>	<p>Mouse placenta</p> <p>Beta-galactosidase rabbit mAb HA721562</p>	<p>Mouse bone marrow</p> <p>TGF beta 1 rabbit mAb HA724012</p>	<p>NR8383 cells treated with TPA and LPS</p> <p>IL-1 beta rabbit mAb HA723965</p>	<p>p16INK4a rabbit mAb HA723746</p>	<p>GDF15 rabbit mAb HA722551</p>
---	---	--	---	---	--

客户应用案例精选



(揭示了 FFAR4 激动剂调节足细胞衰老，改善肾小球疾病、延缓肾脏衰老)

在阿霉素诱导的肾病足细胞衰老实验中，四川大学华西医院研究团队使用衰老标志物抗体 p16INK4a (Catalog# HA721415, 华安生物), p53 (Catalog# EM1701-91, 华安生物), Rb (Catalog# ET1607-9, 华安生物) 进行 Western Blot 验证, 以及 α -SMA 抗体 (Catalog# ET1607-53, 华安生物) 进行 IHC-P 实验, 发现 TUG891 通过调节足细胞衰老改善肾脏纤维化。

数据来源: Mol Ther. 2025 Sep 3;33(9):4636-4654. doi: 10.1016/j.jymthe.2025.05.035. (四川大学华西医院)

杭州华安生物技术有限公司

Hangzhou HuaAn Biotechnology Co.,Ltd.

地址: 杭州市钱塘新区白杨街道6号大街452号高科技企业
孵化园区2号楼16层D区
邮编: 310012 邮箱: sales@huabio.cn
电话: 0571-88062880 传真: 0571-88060400



聚焦抗体, 专业服务! www.huabio.cn
售后技术支持电话: 0571-86052305



Antibodies

Product name	Catalog#	Species reactivity	Tested applications	Antibody type
53BP1	ET1704-05	H,Ms,R	WB,IF-Cell,IF-Tissue,IHC-P,FC	Rabbit mAb
AMPK alpha 1	ET1608-40	H,Ms,R	WB,IF-Cell,IF-Tissue,FC,IP,IHC-Fr,IHC-P	Rabbit mAb
Phospho-AMPK alpha 1 (S496)	ET1612-72	H,Ms	WB,IP,IHC-Fr	Rabbit mAb
ATM	ET1606-20	H,R	WB,IF-Cell,IF-Tissue,IHC-P	Rabbit mAb
Phospho-ATM (S1981)	ET1705-50	H,Ms	WB,IF-Cell,IF-Tissue,IHC-P,IP,FC	Rabbit mAb
ATR	HA500176	H,R	WB,IHC-P	Rabbit pAb
Phospho-ATR (T1989)	HA721190	H	WB,IF-Cell	Rabbit mAb
GLB1 / Beta-galactosidase	HA721562	H,Ms,R	WB,FC,IHC-P	Rabbit mAb
Cdk2	ET1602-6	H,Ms,R	WB,IF-Cell,IF-Tissue,IHC-P,IP,FC	Rabbit mAb
Cdk4	ET1612-23	H,Ms,R	WB,IF-Cell,IF-Tissue,IHC-P,FC	Rabbit mAb
Cdk6	ET1612-3	H	IF-Cell,IF-Tissue,IHC-P,FC,WB	Rabbit mAb
Cdk6	ER40101	H,Ms,R,Mk	WB,IF-Cell,IHC-P	Rabbit pAb
Cyclin D1	ET1601-31	H,Ms,R	WB,IF-Cell,IF-Tissue,IHC-P,IP,FC	Rabbit mAb
GDF15	HA723178	H	WB,IHC-P	Rabbit mAb
HMGB1	ET1601-2	H,Ms,R	WB,IF-Cell,IF-Tissue,IHC-P,FC,IHC-Fr	Rabbit mAb
Human IL-6	HA601051	H	WB,ELISA	Mouse mAb
IL-6	M1303-3	Ms	WB,IF-Cell,FC,ELISA	Mouse mAb
IL-1 beta	HA601036	H,Ms,R	WB,ELISA,IHC-P,IF-Tissue	Mouse mAb
IL-1 beta	HA723965	Ms,R	WB,IHC-P,IF-Cell	Rabbit mAb
Ki67	HA721115	H,Ms,R,Cmk	IHC-P,IF-Tissue,mIHC,IF-Cell,FC	Rabbit mAb
Lamin B Receptor / LBR	HA721912	H	WB,IHC-P,IF-Cell,FC	Rabbit mAb
Lamin B1	ET1606-27	H,Ms,R	WB,IF-Tissue,IHC-P,CUT&Tag-seq	Rabbit mAb
LAMP1	HA722827	H,Ms,R	WB,IHC-P,IF-Tissue,IHC-Fr,IP	Rabbit mAb
LAMP1	HA722302	Ms	WB,IF-Cell,IHC-P,FC,IP,IF-Tissue,IHC-Fr	Rabbit mAb
LAMP2a	ET1601-24	H,Ms,R	WB,IHC-P,IP	Rabbit mAb
LC3B	ET1701-65	H,Ms,R	WB,IF-Cell,IHC-P,IF-Tissue,IP,mIHC	Rabbit mAb
MMP-3	ET1705-98	H,Ms,R	WB,IHC-P,IF-Tissue	Rabbit mAb
mTOR	ET1608-5	H,Ms,R	WB,IHC-P,IP,IF-Cell,IF-Tissue	Rabbit mAb
Phospho-mTOR (S2448)	HA600094	H,Ms,R	WB,IHC-P	Mouse mAb
p16INK4a	HA601131	H	IHC-P,WB,IF-Cell	Mouse mAb
p16INK4a	HA723746	Ms	WB,IHC-P,IP	Rabbit mAb
p21	HA722685	H	WB,IF-Cell,IHC-P,IP	Rabbit mAb
p21	HA722065	Ms	WB,IF-Cell,IHC-P,FC,mIHC	Rabbit mAb
p53	HA601315	H,Ms,Mk	WB,IF-Cell	Mouse mAb
p53 (acetyl K370)	ET1602-38	H,Ms,R	WB,IF-Cell,IF-Tissue,FC	Rabbit mAb
Phospho-p53 (S33)	HA722703	H,Ms,R	WB,IF-Cell,IHC-P	Rabbit mAb
Phospho-p53 (S392)	ET1606-24	H,Ms,R	WB,IHC-P,IP	Rabbit mAb
Phospho-p53 (S15)	HA721756	H	WB,IF-Cell	Rabbit mAb
Phospho-Histone H2A.X (S139)	ET1602-2	H,Ms,R,Cmk	WB,IHC-P,IF-Cell,IF-Tissue	Rabbit mAb
Rb	ET1607-9	H,Ms	WB,IF-Cell,IF-Tissue,IHC-P,IP	Rabbit mAb
Phospho-Rb (S807/S811)	HA723268	H,Ms	WB,IHC-P,IF-Cell,FC,IP	Rabbit mAb
SIRT1	ET1603-3	H,Ms,R	WB,IF-Cell,IF-Tissue,IHC-P,ChIP	Rabbit mAb
SQSTM1 / p62	HA721171	H,Ms,R,Cmk,P	WB,IHC-P,IF-Cell,FC,IF-Tissue,IHC-Fr	Rabbit mAb
Phospho-SQSTM1 / p62 (S349)	HA723050	H,Ms	WB,IF-Cell,IHC-P	Rabbit mAb
TGF beta 1	HA724012	H,Ms,Mk	WB,IF-Cell,IHC-P,FC	Rabbit mAb

ELISA Kits

Catalog#	Product name
EH0010	Human CCL2/MCP-1 ELISA Kit
EH0123	Human cIAP2 ELISA Kit
EH0054	Human CXCL1/GRO alpha ELISA Kit
EH0026	Human CXCL10/IP-10 ELISA Kit
EH0193	Human EphA2 ELISA Kit
EH0051	Human GM-CSF ELISA Kit
EH0019	Human HGF ELISA Kit
EH0064	Human ICAM-1/CD54 ELISA Kit
EH0039	Human IFN-γ ELISA Kit
EH0006	Human IL-1β ELISA Kit
EH0001	Human IL-6 ELISA Kit
EH0014	Human IL-8/CXCL8 ELISA Kit
EH0135	Human MMP-13 ELISA Kit
EH0169	Human MMP-3 ELISA Kit

ELISA Kits

Catalog#	Product name
EH0077	Human uPAR ELISA Kit
EH0012	Human/Mouse/Rat/Porcine/Canine TGF-β1 ELISA Kit
EM0025	Mouse CCL2/MCP-1 ELISA Kit
EM0017	Mouse CXCL1/KC ELISA Kit
EM0011	Mouse GM-CSF/CSF2 ELISA Kit
EM0009	Mouse IFN-γ ELISA Kit
EM0047	Mouse IL-1 alpha/IL-1 F1 ELISA Kit
EMSS0029	Mouse IL-1β Super Sensitivity ELISA Kit (高敏)
EM0029	Mouse IL-1β ELISA Kit
EM0004	Mouse IL-6 ELISA Kit
ER0010	Rat CXCL1/GRO alpha ELISA Kit
ER0006	Rat IFN-γ ELISA Kit
ER0001	Rat IL-1β ELISA Kit
ER0004	Rat IL-6 ELISA Kit

*H: Human; Ms: Mouse; R: Rat; Cmk: Cynomolgus monkey; P: Pig; Mk: Monkey

扫码了解更多
“细胞衰老标志物检测”
产品信息

