

# Ubiquitin / Proteasome家族

蛋白酶体 (Proteasome) 家族蛋白是真核细胞和古细菌中负责选择性降解蛋白质的核心复合物，通过泛素-蛋白酶体系统 (UPS) 调控细胞内蛋白质稳态，影响细胞周期、信号传导和免疫应答等关键过程。

## 优质抗体推荐

Product name	Catalog#	Reactivity	Tested applications	Antibody type
PSMA7	HA723599	H,Ms,R,Mk	WB,IF-Cell,IHC-P,FC	Rabbit mAb
PSMB2	HA721308	H	WB	Rabbit mAb
PSMB5	HA723724	H,Ms,R,Mk	WB,IF-Cell,IHC-P,FC	Rabbit mAb
PSMC5	HA721301	H,Ms,R	WB,IHC-P	Rabbit mAb
PSMC6	HA721270	H,Ms,R	WB,IHC-P,FC	Rabbit mAb
PSMD6	HA601127	H	WB,IHC-P	Mouse mAb
PSMD13	HA721399	H,Ms,R	WB,IHC-P,IF-Cell	Rabbit mAb
PSME1	ET7106-98	H,Ms,R	WB,IF-Cell,IF-Tissue,IHC-P,IP	Rabbit mAb
PSME2	HA721263	H,Ms,R	WB,IF-Cell,IHC-P,FC	Rabbit mAb

\*H: Human; Ms: Mouse; R: Rat; Mk: Monkey

## 产品特点

### 高灵敏性

高稀释比，信号强，背景低。

01



### 高特异性

KD和诱导材料验证，确保抗体的特异性。

02



### 种属 / 应用全面

满足不同种属、不同应用的实验需求。

03



杭州华安生物技术有限公司

Hangzhou HuaAn Biotechnology Co.,Ltd.

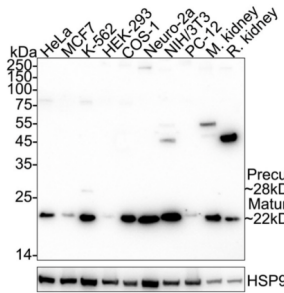
地址：杭州市钱塘新区白杨街道6号大街452号高科技企业孵化园区2号楼16层D区  
 邮编：310012 邮箱：sales@huabio.cn  
 电话：0571-88062880 传真：0571-88060400



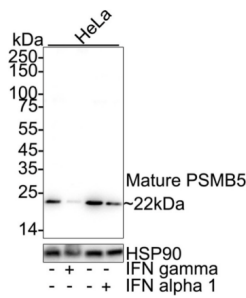
聚焦抗体，专业服务！ [www.huabio.cn](http://www.huabio.cn)  
 售后技术支持电话：0571-86052305



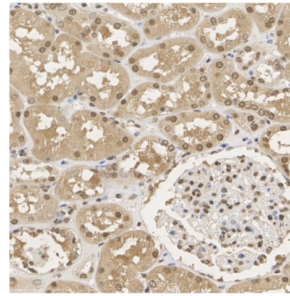
PSMB5 重组兔单抗 | HA723724



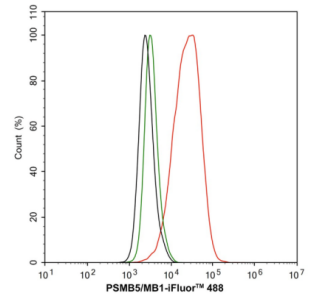
WB analysis on different lysates  
(1/10,000 dilution)



WB analysis on different lysates  
(1/10,000 dilution)  
The expression is down-regulated  
in response to IFN gamma or IFN  
alpha 1 treatment.

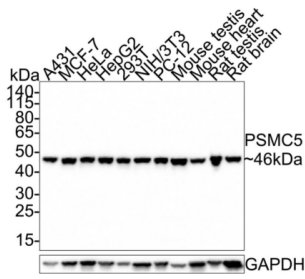


IHC-P staining with human  
kidney tissue  
(1/2,000 dilution)

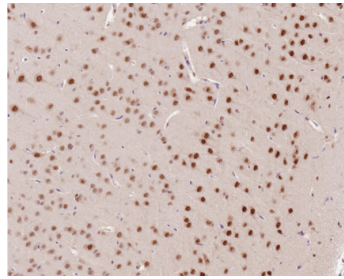


FC analysis of HeLa cells  
(1/1,000 dilution)

PSMC5 重组兔单抗 | HA721301

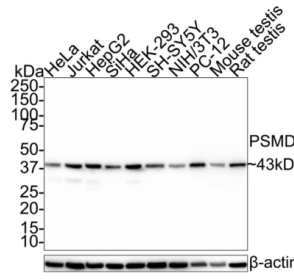


WB analysis on different lysates  
(1/1,000 dilution)

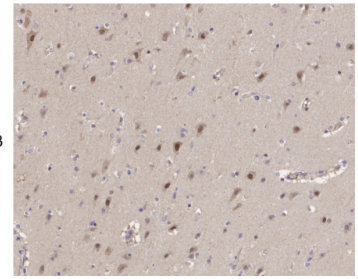


IHC-P staining with mouse brain tissue  
(1/1,000 dilution)

PSMD13 重组兔单抗 | HA721399

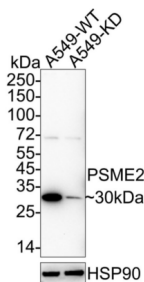


WB analysis on different lysates  
(1/1,000 dilution)

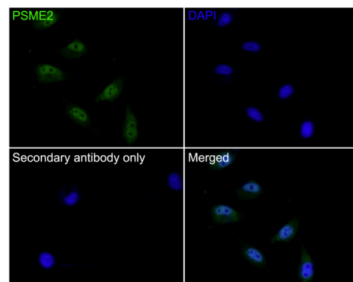


IHC-P staining with human brain tissue  
(1/200 dilution)

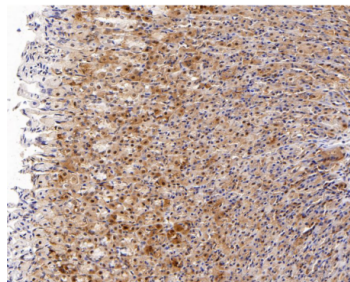
PSME2 重组兔单抗 | HA721263



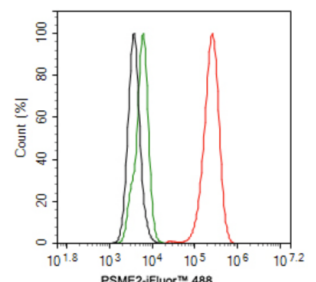
WB analysis on different lysates  
(1/2,000 dilution)  
Knockdown (KD) validated.



IF-cell analysis of HeLa cells  
(1/100 dilution)



IHC-P staining with rat stomach tissue  
(1/4,000 dilution)



FC analysis of HeLa cells  
(1/1,000 dilution)