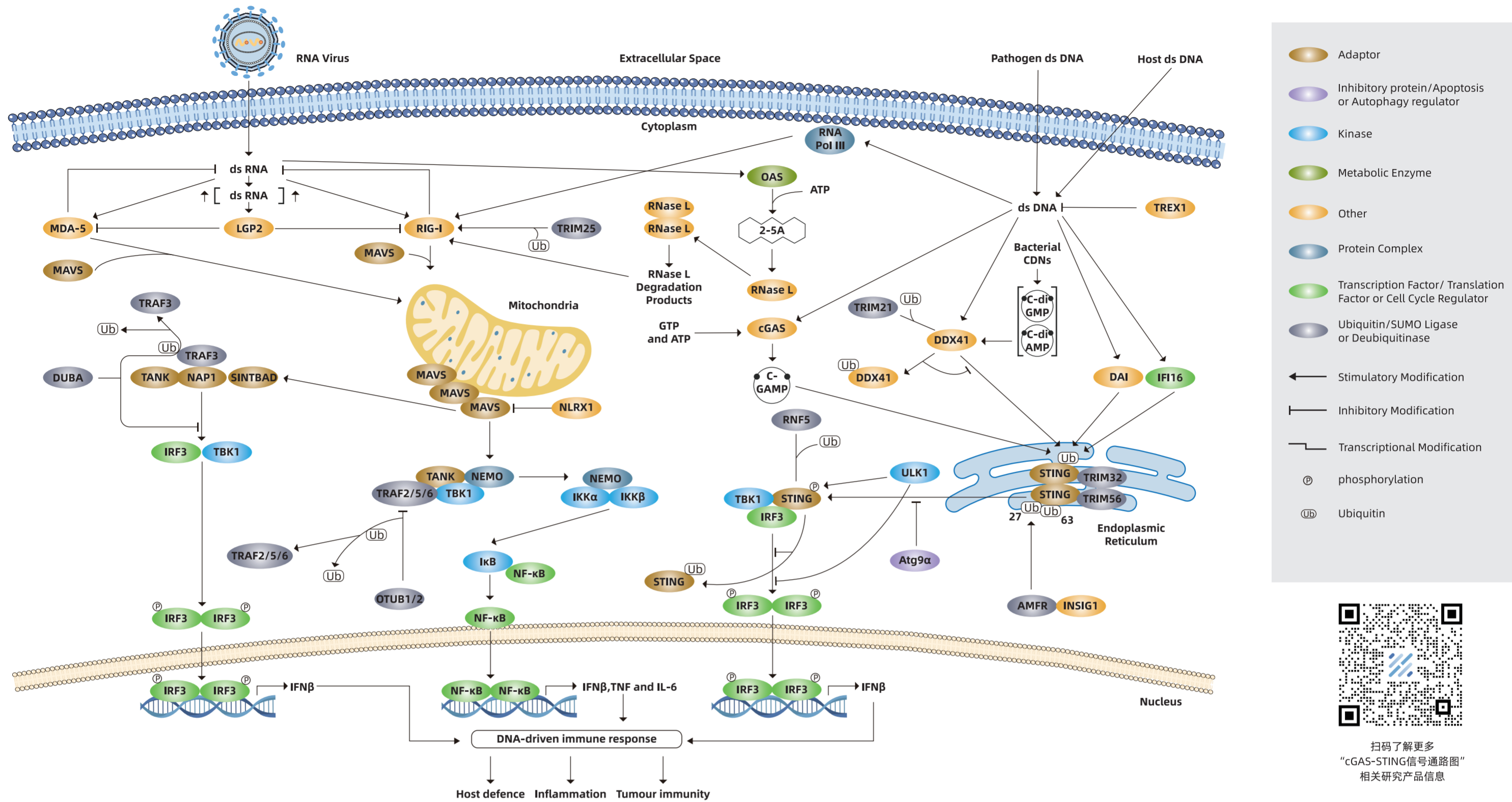
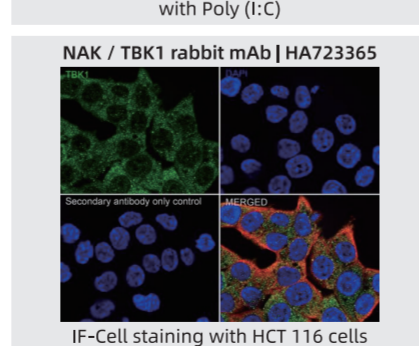
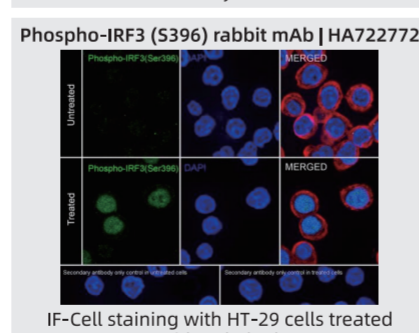
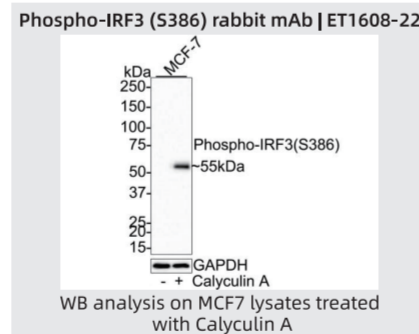
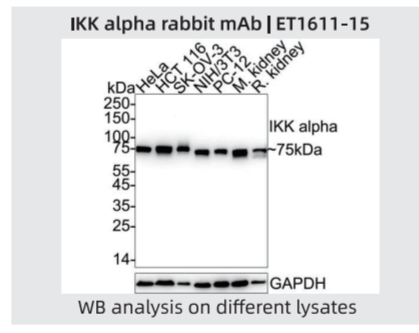
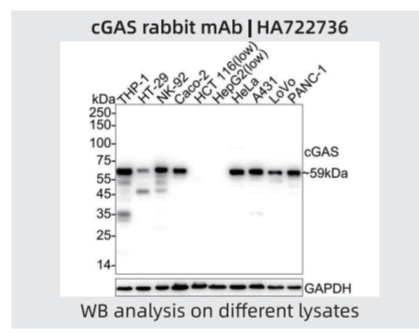


cGAS-STING Signaling Pathway



扫码了解更多
“cGAS-STING信号通路图”
相关研究产品信息

Product name	Catalog#	Reactivity	Application
ADAR	ET7106-72	H	WB,IF-Cell,IHC-P,IF-Tissue,FC
AIM2	HA500270	H	WB,IF-Cell,FC
Caspase-1	ET1608-69	H,Ms,R	WB,FC,IF-Cell
Caspase-1 + p10 + p12	HA722222	H,Ms,R	WB,IF-Cell,IHC-P
Caspase-3 p12	HA722235	H,Ms,R	WB,IHC-P
Cleaved Caspase-3	ET1602-47	H,P	WB,IF-Cell,IF-Tissue,IHC-P
Cleaved + pro Caspase-3	ET1608-64	H,Ms,R	WB,IHC-P,IP
Pro Caspase-3	ER30804	H,Ms	WB,IF-Cell,IHC-P,FC,IHC-Fr
Pro Caspase-3	ET1602-39	H	WB,IF-Cell,IF-Tissue,IHC-P,IP,FC
pro Caspase-3	ET1603-26	H,Ms	WB,IF-Tissue,IHC-P
Caspase-7	HA722317	Ms,R	WB,IHC-P,IF-Cell,FC
pro Caspase-7	ET1612-28	H	WB,IF-Cell,IF-Tissue,IHC-P
Caspase-8	ET1603-16	H	WB,IF-Tissue,IHC-P
Caspase-8	HA722181	H	WB,IF-Cell,IHC-P,FC,IP
Caspase-8 (p18)	HA722482	Ms	WB,IF-Cell
CCL4 / MIP-1 beta	HA721904	H,Ms	WB
cGAS	HA500023	H,Ms,R,P	WB,IF-Cell,IHC-P
cGAS	HA722736	H	WB
DDX58	HA500374	H,Ms	WB,IHC-P,IF-Cell,FC
DFNA5 / GSDME	EM1901-48	H	WB,IF-Cell,IHC-P,FC
DFNA5 / GSDME	ER1901-12	H	WB,IHC-P,FC
DFNA5 / GSDME	HA723251	H,Ms	WB,IP
FADD	HA721353	H	WB,IHC-P,IF-Cell
FADD	HA721625	H	WB,IF-Cell,FC
G3BP	HA721314	H,Ms,R	WB,IHC-P,IF-Cell,FC
Gasdermin D (N terminal)	ER1901-37	H,Ms,R	WB,IHC-P,FC,IF-Cell
Gasdermin D (N terminal)	HA721144	H,Ms,R	WB,IHC-P,IF-Cell
GSDMD	HA601046	H,Ms	WB
Human IL-1 beta	HA721712	H	WB
Human IL-18	HA721767	H	WB,IHC-P
IFN gamma Receptor beta	HA500246	H,Ms,R	WB,IF-Cell,IHC-P
IFNAR2	HA500284	H	WB,IHC-P,IF-Cell
IFNGR1	HA721952	H,Ms,R	WB,IHC-P
IFNGR1	HA722508	H	WB,IF-Cell
IFNGR2	HA500363	H,Ms,R	WB,IF-Cell
IKB alpha	ET1603-6	H,Ms,R	WB,IF-Cell,IF-Tissue,IHC-P,IP,FC
Phospho-IkB alpha (S32)	ET1609-78	H,Ms	WB,IF-Cell,IP
Phospho-IkB alpha (S36)	HA721802	H,Ms,R	WB
IKB beta	ET1611-1	H	WB,IF-Cell,IHC-P,IP
IKBKE	ET1706-20	H	WB,IF-Cell,FC,IHC-P
IKK alpha	ET1611-15	H,Ms,R	WB,IHC-P,IP,FC
IKK alpha + IKK beta	ET1611-23	H,Ms,R	WB,IF-Cell,IP
IKK beta	R1706-13	H,Ms,R	WB,IF-Cell,IHC-P,FC
IKK gamma	ET1704-40	H,Ms,R	WB,IHC-P,IF-Cell,IF-Tissue,IP,FC
IL-1 beta	ET1701-39	H	WB,IF-Cell,IF-Tissue,IHC-P,FC
IL-1 beta	HA601002	H,Ms,R	WB,ELISA,IF-Cell
IL-6	R1412-2	H,Ms,R	WB,IF-Cell,IHC-P,FC
IL-6	EM1701-45	Ms,R	WB,IF-Cell
Interferon alpha	ER1802-4	H,Ms,R	WB,IF-Cell,IHC-P,FC
Interferon alpha 2	HA722967	H	WB,IF-Cell,IHC-P



Product name	Catalog#	Reactivity	Application
IP10	ET1704-27	H	WB,IF-Cell,IF-Tissue,IHC-P
IRF3	ET1612-14	H,Ms,R	WB,IF-Cell,IF-Tissue,IHC-P,FC,IP
Phospho-IRF3 (S386)	ET1608-22	H,Ms	WB,IF-Cell,IF-Tissue
Phospho-IRF3 (S396)	HA722772	H,Ms,R	WB,IHC-P,IF-Cell,FC
IRF7	ET1610-89	H,Ms,R,Z	WB,IF-Cell,IF-Tissue,IHC-P,FC,IP
IRF9	HA722916	H,Ms,R	WB,IHC-P,IF-Cell,FC,IP
IRF9	HA722963	H	WB,IF-Cell,IP,ChIP
JAK1	ET1705-84	H,Ms,R	WB,IHC-P,FC,IF-Cell,IF-Tissue
MAVS	HA721310	H,Ms,R	WB,IHC-P,IF-Cell,IP
MAVS	HA721708	H	WB,IHC-P,IF-Cell,IF-Tissue
MLKL	ET1601-25	H,Ms	WB,IHC-P,IF-Cell,FC
Phospho-MLKL (S345)	ET1705-51	Ms	WB,IHC-P,IHC-Fr
NAK / TBK1	HA601045	H,Ms,R	WB
NAK / TBK1	HA723365	H,Ms,R	WB,IF-Cell,FC,IP
NF-kB p105 / p50	ET1603-18	H,Ms,R	WB,IHC-P,ICC,FC,IF-Tissue
NF-kB p65	ER0815	H,Ms,R,Z	WB,IHC-P,FC
NF-kB p65	ET1603-12	H,Ms,R,Z	WB,IF-Cell,IF-Tissue,IHC-P,IP,FC
Phospho-NF-kB p65 (S529)	ET1604-27	H	WB,IHC-P,FC,IP
NF-kB p65	HA500402	H,Ms,R	WB,IHC-P,IF-Cell
NF-kB p65	HA721307	H,Ms,R,Mk	WB,IHC-P,IF-Cell,FC
Phospho-NF-kB p65 (S536)	HA723223	H,Ms	WB,IF-Cell
NLRP3	ET1610-93	H,Ms,R	WB,IF-Cell,IHC-P,FC
PCBP1	HA600019	H,Ms	WB,IHC-P
PCBP1	R1608-6	H,Ms,R	WB,IF-Cell,IHC-P,FC
POLR2H	ER1902-46	H	WB
Pyrin	HA722509	H	WB,FC
RANTES	ET1705-70	H,Ms	WB,IHC-P,IF-Cell,IF-Tissue
RASA1	HA720052	H,Ms,R	WB,IF-Cell
RIP	ET1701-79	H	WB,FC,IP
RIP3	ER1901-27	H,Ms,R	WB,IF-Cell,IHC-P
RIP3	ER1902-67	H,R,Ms	WB,IHC-P,FC
Phospho-RIP3 (S232)	HA721428	Ms,R	WB,IF-Cell
SAMHD1	ET1706-24	H	WB,IF-Cell,IHC-P,FC
Phospho-STAT1 (S727)	ET1611-20	H,Ms,R	WB,IHC-P,IF-Cell,FC
STAT1	ET1612-22	H,Ms,R	WB,IF-Cell,IF-Tissue,IHC-P,FC,IP
Phospho-STAT1 (Y701)	HA722083	H	WB,IF-Cell
STAT1	M1407-1	H	WB,IF-Cell,IHC-P,IF-Tissue
STAT1 alpha	ET1606-39	H,Ms	WB,IP,FC,IHC-P,IF-Cell,IF-Tissue
STAT2	ET1702-18	H,Ms,R	WB,IF-Cell,IHC-P,FC
STING	ET1705-68	H,R	WB,IHC-P,IF-Cell,IF-Tissue,IP
STING	HA722832	H,Ms,R	WB,IF-Cell,IHC-P,FC,IF-Tissue,IP
Phospho-STING (S366)	HA723137	H	WB,Dot Blot,IP
TMS1	ET1611-62	H	WB,IF-Cell,IF-Tissue,IHC-P,FC
Human TNF alpha	HA721286	H	IHC-P,mIHC
TNF alpha	HA722022	H,Ms	WB
Human TNF alpha	IRS040	H	mIHC
TNF Receptor I	HA500140	H	WB,IHC-P,FC
TREX1	ET1708-16	H	WB,IF-Cell,IF-Tissue,IHC-P,IP
Tyk2	ER1803-05	H,R	WB,IF-Cell,IHC-P,FC

*H: Human; Ms: Mouse; R: Rat; Z: Zebrafish; Mk: Monkey; P: Pig

