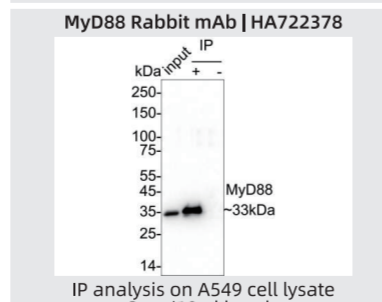
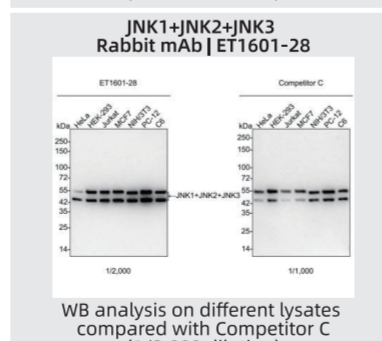
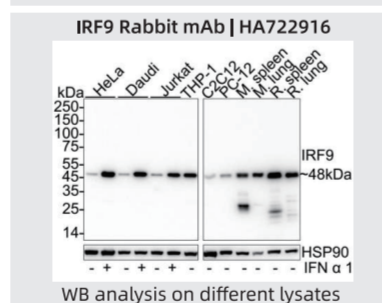
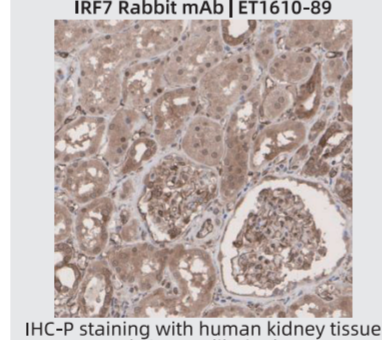
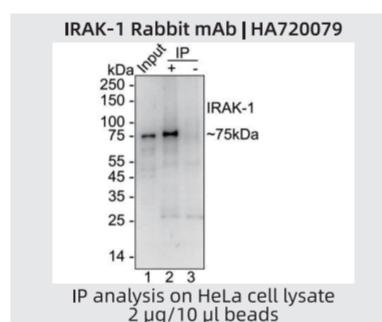


扫码了解更多
“TLR信号通路图”
相关研究产品信息

Primary Antibodies			
Product name	Catalog#	Reactivity	Application
Caspase-8	ET1106-72	H	WB, IF-Cell, IHC-P, IF-Tissue, FC
Caspase-8 (p18)	HA500270	H	WB, IF-Cell, FC
Cathepsin K	ET1608-69	H, Ms, R	WB, FC, IF-Cell
Cathepsin L/V/K/H	HA722222	H, Ms, R	WB, IF-Cell, IHC-P
CCL3 / MIP-1 alpha	HA722235	H, Ms, R	WB, IHC-P
CD14	ET1602-47	H, P	WB, IF-Cell, IF-Tissue, IHC-P
CD14	ET1608-64	H, Ms, R	WB, IHC-P, IP
CD40	ER30804	H, Ms	WB, IF-Cell, IHC-P, FC, IHC-Fr
CD80	ET1602-39	H	WB, IF-Cell, IF-Tissue, IHC-P, IP, FC
CD86	ET1603-26	H, Ms	WB, IF-Tissue, IHC-P
c-Fos	HA722317	Ms, R	WB, IHC-P, IF-Tissue
ERK1/2	ET1612-28	H	WB, IF-Cell, IF-Tissue, IHC-P
FADD	ET1603-16	H	WB, IF-Tissue, IHC-P
Human IL-6	HA722181	H	WB, IF-Cell, IHC-P, FC, IP
Human TNF alpha	HA722482	Ms	WB, IF-Cell
IFNAR1	HA721904	H, Ms	WB
IFNAR2	HA500023	H, Ms, R, P	WB, IF-Cell, IHC-P
IKK alpha	HA722736	H	WB
IKK beta	HA500374	H, Ms	WB, IHC-P, IF-Cell, FC
IKK gamma	EM1901-48	H	WB, IF-Cell, IHC-P, FC
IL-1 beta	ER1901-12	H	WB, IHC-P, FC
IL-6	HA723251	H, Ms	WB, IP
IRAK-1	HA721353	H	WB, IHC-P, IF-Cell
IRF3	HA721625	H	WB, IF-Cell, FC
IRF5	HA721314	H, Ms, R	WB, IHC-P, IF-Cell, FC
IRF7	ER1901-37	H, Ms, R	WB, IHC-P, FC, IF-Cell
IRF9	HA721144	H, Ms, R	WB, IHC-P, IF-Cell
JNK1+JNK2+JNK3	HA601046	H, Ms	WB
JNK2	HA721712	H	WB
JNK3	HA721767	H	WB, IHC-P
MEK1	HA500246	H, Ms, R	WB, IF-Cell, IHC-P
MEK1/2	HA500284	H	WB, IHC-P, IF-Cell
MyD88	HA721952	H, Ms, R	WB, IHC-P
NAK / TBK1	HA722508	H	WB, IF-Cell
NF-kB p105 / p50	HA500363	H, Ms, R	WB, IF-Cell
NF-kB p65	ET1603-6	H, Ms, R	WB, IF-Cell, IF-Tissue, IHC-P, IP, FC
Osteopontin	ET1609-78	H, Ms	WB, IF-Cell, IP
p38 alpha / MAPK14	HA721802	H, Ms, R	WB
p38 gamma / MAPK12	ET1611-1	H	WB, IF-Cell, IHC-P, IP
Phospho-IKB alpha (S32)	ET1706-20	H	WB, IF-Cell, FC, IHC-P
Phospho-IKB alpha (S32/S36)	ET1611-15	H, Ms, R	WB, IHC-P, IP, FC
Phospho-IKB alpha (S36)	ET1611-23	H, Ms, R	WB, IF-Cell, IP
Phospho-IRF3 (S396)	R1706-13	H, Ms, R	WB, IF-Cell, IHC-P, FC
Phospho-JNK1/2/3 (T183 + T183 + T221)	ET1704-40	H, Ms, R	WB, IHC-P, IF-Cell, IF-Tissue, IP, FC
Phospho-MEK1 (S298)	ET1701-39	H	WB, IF-Cell, IF-Tissue, IHC-P, FC
Phospho-MEK1/2 (S218 + S222)	HA601002	H, Ms, R	WB, ELISA, IF-Cell
Phospho-NF-kB p65 (S529)	R1412-2	H, Ms, R	WB, IF-Cell, IHC-P, FC
Phospho-NF-kB p65 (S536)	ER1701-45	Ms, R	WB, IF-Cell
Phospho-p38 (T180)	ER1802-4	H, Ms, R	WB, IF-Cell, IHC-P, FC
Phospho-PI3K p85 (Y467) + PI3K p55 (Y199)	HA722967	H	WB, IF-Cell, IHC-P
PI 3 Kinase p110 delta	ET1705-46	H, Ms, R	WB, IHC-P



Primary Antibodies			
Product name	Catalog#	Reactivity	Application
PI 3 Kinase p55 gamma	ET1602-27	H, Ms, R	WB, IF-Cell, IF-Tissue, IHC-P
PI 3 Kinase p85 alpha	ET1608-70	H, Ms, R	WB, IF-Cell, IF-Tissue, IHC-P, FC
PI 3 Kinase p85 beta	ET1609-30	H, Ms, R	WB, IF-Cell, IF-Tissue, IHC-P, FC, IP
PI3 Kinase p110 beta	HA722474	H, Ms, R	WB, IHC-P, IF-Tissue
PI3 Kinase p110α	ET1606-36	H, Ms	WB, IF-Cell, IF-Tissue, IP, IHC-P
PI3-kinase p110 subunit beta	ET1610-36	H	WB, IP, IHC-P, FC
RAC1	HA722225	H, R	WB, IF-Cell
RAC1/2/3	HA500424	H, Ms, R	WB, IHC-P, IF-Cell, FC
RANTES	ET1705-70	H, Ms	WB, IHC-P, IF-Cell, IF-Tissue
RIP	ET1701-79	H	WB, FC, IP
TAB1	HA500400	H, Ms, R	WB, IHC-P, IF-Cell, FC
TAK1	ET1705-14	H, Ms, R, Mk	WB
TIRAP	HA722001	H, Ms	WB
TLR2	ET1705-92	H, Ms, R	WB, FC, IF-Cell
TLR5	ET1703-30	H, Ms, R	WB
TLR7	ET1704-11	H	WB
TLR9	HA722299	H	WB
TNF alpha	HA722022	H, Ms	WB
TRAF3	HA721654	H, Ms, R	WB
TRAF6	HA722857	H, Ms, R	WB, IF-Cell, FC
TRIF	HA722268	H	WB

ELISA Kits			
Product name	Catalog#	Size	Sensitivity
Human CCL3/MIP-1 ELISA Kit	EH0146	96T	0.05 pg/ml (50 µl); 0.52 pg/ml (10 µl)
Human CCL5/RANTES ELISA Kit	EH0027	96T	0.7 pg/ml (50 µl); 4.65 pg/ml (10 µl)
Human CCL5/RANTES ELISA Kit(one step)	EHY0027	96T	0.7 pg/ml (50 µl); 4.99 pg/ml (10 µl)
Human CD80 ELISA Kit	EH0121	96T	0.08 pg/ml (50 µl); 0.52 pg/ml (10 µl)
Human CXCL10/IP-10 ELISA Kit	EH0026	96T	0.16 pg/ml (50 µl); 0.68 pg/ml (10 µl)
Human CXCL9/MIG ELISA Kit	EH0015	96T	2.24 pg/ml (50 µl); 5.32 pg/ml (10 µl)
Human IFN-α ELISA Kit	EH0085	96T	0.03 pg/ml (50 µl); 0.24 pg/ml (10 µl)
Human IFN-β ELISA Kit	EH0017	96T	0.35 pg/ml (50 µl)
Human IL-12B/IL-12 p40 ELISA Kit	EH0098	96T	0.29 pg/ml (50 µl); 1.84 pg/ml (10 µl)
Human IL-12p70 ELISA Kit	EH0021	96T	3.42 pg/ml (50 µl); 1.63 pg/ml (10 µl)
Human IL-1β ELISA Kit	EH0006	96T	0.77 pg/ml (10 µl)
Human IL-6 ELISA Kit	EH0001	96T	0.26 pg/ml (50 µl); 0.43 pg/ml (10 µl)
Human IL-8/CXCL8 ELISA Kit	EH0014	96T	1.45 pg/ml (50 µl); 3.63 pg/ml (10 µl)
Human Osteopontin (OPN) ELISA Kit	EH0057	96T	0.04 ng/ml (50 µl); 0.12 ng/ml (10 µl)
Human TNF-α ELISA Kit	EH0002	96T	0.21 pg/ml (50 µl); 0.26 pg/ml (10 µl)
Mouse CCL3/MIP-1 alpha ELISA Kit	EM0031	96T	0.51 pg/ml (10 µl)
Mouse CCL5 / RANTES ELISA Kit	EM0032	96T	1.86 pg/ml (10 µl)
Mouse CD86 ELISA Kit	EM0046	96T	0.28 pg/ml (10 µl)
Mouse CXCL9/MIG ELISA Kit	EM0015	96T	0.29 pg/ml (10 µl)
Mouse IFN-β ELISA Kit	EM0040	96T	7.69 pg/ml (10 µl)
Mouse IL-12/IL-23 p40 ELISA Kit	EM0012	96T	1.65 pg/ml (10 µl)
Mouse IL-1β ELISA Kit	EM0029	96T	0.91 pg/ml (10 µl)
Mouse IL-6 ELISA Kit	EM0004	96T	0.36 pg/ml (10 µl)
Mouse TNF-α ELISA Kit	EM0010	96T	0.097 pg/ml (10 µl)
Rat IL-6 ELISA Kit	ER0004	96T	7.05 pg/ml (50 µl)
Rat TNF-α ELISA Kit	ER0007	96T	0.08 pg/ml (50 µl); 0.16 pg/ml (10 µl)

*H: Human; Ms: Mouse; R: Rat; Cm: Cynomolgus monkey; Mk: Monkey; P: Pig; Z: Zebrafish; Cw: Cow; D: Dog

